

2023-2024

VIEW RIDGE ELEMENTARY

FAMILY HANDBOOK



Tina Wood, Principal
Amy Lee, Assistant Principal
Kara Reintegrado, Office Manager
Torie Wagner, Office Assistant

VIEW RIDGE INFORMATION

202 Alder St. Everett WA, 98203

Office 425.385.5400

View Ridge Attendance email: VREAttendance@everettsd.org

View Ridge Attendance Line: 425.385.5405

Office Hours

8:00 AM – 4:00 PM

Regular Schedule

Grades K-5 9:10 AM – 3:30 PM

Learning Improvement Fridays

Grades K-5 9:10 AM – 2:15 PM

Early Release Schedule

Grades K-5 9:10 AM – 1:00 PM

Equity

At View Ridge we celebrate and embrace diversity, peace, and equity along with our five Viking Values of respect, Responsibility, Kindness, integrity, and perseverance. We have a duty to identify and break down any barriers that do not honor these values and allow each and every student to thrive, share their voice, and feel a sense of belonging. This is accomplished by working together as a Viking family, continually striving for growth. As a school we are committed to this growth and here to listen and support our students. We are strong together.

IN-SCHOOL INJURIES AND/OR ACCIDENTS

If your child is injured at school, he or she will be given first aid by the school health assistant or someone who is trained in first aid. We will call parents immediately if the situation is serious. If parents are not at home, the person listed for an emergency will be contacted.

IF THERE IS ANY CHANGE OF EMERGENCY INFORMATION DURING THE SCHOOL YEAR, PLEASE INFORM THE SCHOOL OFFICE.

AFTER / BEFORE - SCHOOL ACTIVITIES

At various times throughout the school year we give students an opportunity to participate in specially planned before or after-school activities. Participation in these is optional. We will send parents a written notice of activities and will need to sign a permission slip as well as provide transportation to school or home for their children.

ANIMALS ON PROPERTY

No dogs or other animals shall be allowed on district property, grass and synthetic athletic fields at any time. No dogs or other animals are allowed on other district property between the hours of 7:00 a.m. and 5:00 p.m. Monday through Friday, except for bona fide service animals. At all other times, dogs or other large animals can be leashed and controlled by their owners. Small animals that cannot be leashed must always be controlled by their owners through other appropriate means. Animal owners must clean up after their animals and remove waste from district premises.

ATTENDANCE

Attendance is a critical component to your child's success at View Ridge Elementary School. We expect all students to attend on-time, every day. Please understand that when your child is absent, we cannot duplicate what has been accomplished in the classroom during the school day.

School hours at View Ridge are 9:10 a.m.-3:30 p.m. The first bell rings at 9:10 a.m. Instruction begins promptly at 9:15, at which time your child should be in their classroom. If

your child is going to be absent from school, email VREAttendance@everettsd.org or call (425)385-5405 to report the day and reason for his/her absence. Student absences must be excused either by email, written note, or phone call. Once your child returns to school following an absence, we expect them to participate fully in school activities.

The state of Washington has a Compulsory Attendance Law, Chapter 28A.225RCW which requires parents to have their children, ages 8 through 18 in attendance.

The law requires us:

1. to inform you in writing or by telephone whenever a child has one unexcused absence during any month.
2. to schedule a conference with you after two unexcused absences within any month.
3. to take steps to reduce or eliminate the absences.

If an extended absence is being considered, please contact your child's teacher and the office for permission. Letters informing parents/guardians of excessive absences and/or tardies will be sent home as required by Washington State Law. Students missing four or more hours in a day will be marked as absent for the entire day.

Tardy (Late arrival)

Students who arrive after the second morning bell (9:15 a.m.) will be marked tardy and must come to the school office to receive a tardy slip to enter the classroom. Parents are requested to notify the office in the event their child will be late. Students who are chronically late miss many learning opportunities and disrupt the classroom. Students who arrive between 10 minutes and one hour after the beginning of school will be marked as having partial attendance. The same is true for students leaving early for 10 minutes early or more.

Early Pick Up Students

If it is necessary for a parent/guardian to pick their child up before the 3:30 p.m. dismissal time, a note must be written stating the specific date and time requested. Students who are dismissed during the school day must be signed out from the school office, by their parent/guardian, before leaving the school grounds. Whenever possible, we ask your assistance in scheduling your child's appointments outside of the school day. A student leaving more than 10 minutes early will be considered as having partial attendance for that day.

ARRIVAL AND DISMISSAL

Safety is our highest priority during arrival and dismissal. To ensure that every child is safe, teachers and support staff are assigned to monitor areas and to escort students off school grounds. Please review the procedures carefully with your child and reinforce the importance of following the procedures daily. Overflow parking is available at the church on 50th and Sunset Lane. Please do not park in the restricted areas on Sunset Lane.



BICYCLES AND WALKING

As per Everett Public School Policy, students in 3rd through 5th grades are welcome to ride their bike without parent/adult supervision. Bicycle riders must abide by the following rules: (1) Ride on the right-hand side of the road; (2) Walk the bicycle on school grounds, physically dismounted from the bike. (3) Park bikes in the bike stand; (4) Secure or lock the bike with a bicycle lock; (5) Students are asked to follow all safety rules while riding to and from school, including wearing a helmet.

Parents: Please make sure your child has the adequate skill to ride his/her bike to school before allowing them to do so.

If your children walk to school, make sure that you familiarize him/her with the route at the beginning of the school year; it would also be a good idea to actually walk with them the first few days. If possible, have them walk each day with other children.

Remind them not to talk to a stranger, and of course to never accept a ride from anyone they don't know (even if they are running late); report any problems to the school and to the police immediately. Stress to your children the need to stay on the sidewalk/pathway, and to walk directly to school. Teach them traffic safety procedures.

BIRTHDAYS

Birthday parties are delightful and give many pleasant memories to children. However, not being invited to a party can be a very unhappy experience for children not receiving an invitation. In consideration of the feelings of children not receiving invitations, we request that no invitations be handed out at school unless each child in the classroom is receiving one. In order to preserve the instructional integrity of the classroom, celebrations in the classroom will be limited to 10 minutes in length. Treats must be store purchased. Since many students have food allergies, it is suggested you speak with the teacher prior to bringing food into the classroom. Flowers and balloons will not be delivered to the classroom.

HARASSMENT, INTIMIDATION & BULLYING (HIB)

It is the policy of View Ridge Elementary School to maintain a safe, respectful, and secure learning environment for all students, which is free from harassment, intimidation, and bullying. Harassment, intimidation, and bullying of students by other students, staff members, volunteers, parents, or guardians are prohibited. It shall be a violation of the District's student discipline policy for any student of the District to harass, intimidate, or bully another student through verbal, nonverbal, or physical conduct, as defined by this policy on school property (or in reasonable proximity thereto), school transportation, or at school-sponsored activities off school property. Bullying is defined as one or more individuals repeatedly inflicting physical, verbal or emotional abuse on another or others. Harassment, intimidation, or bullying can take many forms, including but not limited to, slurs, rumors, name calling, jokes, innuendoes, demeaning comments, drawings, cartoons, pranks, gestures, hazing, physical attacks, threats, or other written, verbal, and nonverbal, or physical actions. Any student who believes that he or she has been subjected to harassment, intimidation, or bullying in the educational environment, is encouraged to bring his or her complaint to the immediate attention of a View Ridge staff member for assistance in resolving the matter. Students are encouraged to report school-related harassment, intimidation, and bullying of which they have knowledge. Staff members and school administrators will use both informal remedies and disciplinary actions as appropriate to the goal of ending harassment, intimidation, and bullying and to prevent its reoccurrence. Such disciplinary action will be consistent with District policy and State and Federal law.

Everett Public Schools will abide by district [policy 3204](#) and [procedure 3204P](#).

BUS RIDING

A list of District Bus Rules and Regulations are distributed to and discussed with all students at the beginning of the school year. These rules are also available in the school office. The following basic rules help ensure safety for all who ride school buses. The driver is in charge and the students must follow the rules established by the driver. If a student is a bus rider, he/she is to ride the bus to which he/she has been assigned each and every school day to and from school. **Any student riding a different bus home or getting off at a different bus stop must have a signed note describing the change, given to his/her teacher. Then the**

student will receive a bus pass from the school office. A continuing bus pass may be issued for such activities as Scouts, dance lessons, etc. Students who ride buses should not arrive at the bus stop more than five minutes prior to the bus pick-up time. While waiting for the bus or walking home after getting off the bus, children are expected to follow View Ridge Elementary behavior expectations. Violation of rules may result in suspension of riding privileges. Incident reports will be mailed home and parents will be notified regarding disciplinary action. Consequences for inappropriate behavior may include a referral to the office, loss of recess or suspension from bus privileges. Kindergarten students will not be allowed to get off the bus without an adult to meet them.

Large packages, glass items, or pets are not permitted on the bus. Small items brought to school, such as for Show and Tell, are to be kept in containers and out of sight. All food must remain in a closed backpack or lunch box and is not to be eaten while riding the bus.

CHANGES IN TRANSPORTATION

When a student (at parent request) is to go home with another student or any other place that is out of their ordinary routine at dismissal, he/she must have a note from the parent brought to the office in the morning. **Phone calls from parents must be received by 2:45 pm. to ensure ample time to get the message to your child.** Teachers are directed to send students home via the usual transportation if there is no note from the parent. One note at the beginning of the year will suffice for bus riders who remain at school or go elsewhere on a scheduled basis such as Scouts, Camp Fire, etc. An individual note should be sent for one-time activities. Arrangements for after school play dates must be made prior to the school day. Students will not be allowed to use the school phones to arrange play dates. Children are not permitted to leave the school grounds for any reason unless given special permission by an administrator or designee.

CAFETERIA

(For the 20232024 school year meals are free to all students at View Ridge)

MEAL PRICES	Breakfast Price	Lunch Price
Elementary K- 5	<i>Free at VRE 23-24</i>	<i>Free at VRE 23-24</i>
Reduced Price	--	--
Adult	\$2.00	\$4.25

Please fill out a [household income report](#) (which was emailed directly to those school families on August 9), in place of the free and reduced lunch application.

Meals can be paid online at www.mypaymentsplus.com. For more information on this program go to the district website at www.everett.k12.wa.us/everett select *Departments*, then *Food & Nutrition*. You may also send in cash or a check made out to Everett Public Schools. Our lunch system is computerized, and the student will enter their student number in the computer as they go through the line. We will assume that the money in each child's

account is for lunch, milk or juice **ONLY**. We will not authorize the purchase of snacks, cookies or ice cream from the account unless you notify our head cook, that you want your child to be able to access his/her account for treats. We realize that some of you will want your child to have the option of using the lunch account for treats, and we want to accommodate that, but you must notify us first.

For those students who are eligible, free or reduced-price meals are available. Guidelines are available in the school office. Should your income status change during the school year, please do not hesitate to request an application anytime during the year.

Student Lunch

Lunch is served at school each day. Students can select the main entrée, yogurt bar or sandwich. Milk or juice is included in each option, as are fresh fruits and vegetables. All food must be consumed in the cafeteria and is not allowed on the playground or in classrooms. Students will be given approximately 20 minutes to eat lunch before being excused to go outside. Slower eaters will be given some additional time to finish eating. Food Focus time is expected for all grades—this is about a ten-minute period of time when students must keep voices at a level zero (silent) and focus on eating their food. This is to promote good nutrition and peaceful lunch periods. During food focus time, announcements, stories, and sometimes demonstrations take place for students' enjoyment. Students will have opportunities to earn various incentives including free seat Friday.

Several students have food allergies. A special table is designated for those with peanut or tree nut allergies. Because of the concern for allergies, food should not be shared with anyone during lunch.

CELL PHONES / Personal Electronic Devices (PEDs)

Students who choose to bring cell phones or PEDs (including Smart Watches) to school may only use them before or after the school day. *During the school day, all cell phones must be powered off and stored in the student's backpack and should not be taken out while at school without teacher permission.* Improper use of a cell phone will result in it being confiscated and a parent will be required to pick it up from the office.

Exceptions include students having an IEP, 504 Plan or Individual Health Care Plan (IHP) that includes specific accommodations for assistive technology may use a cell phone during the school day following the process outlined in the student's IEP, 504 Plan or IHP.

COMPUTER USE

Students use computers and are allowed to access the Internet for instructional purposes only. Student Internet use is planned and closely monitored by the teacher. Any misuse of internet access by students will be cause for disciplinary action. As a 1-1 device school, students will continue to learn the importance of being a responsible digital citizen, to think critically about information on the web, behave safely, and participate responsibly in our digital world. Common Sense Media is a great tool to explore and utilize as a family

<https://www.common sense media.org/>

DELAYED START OF SCHOOL AND EARLY CLOSURES

Occasionally weather and other conditions require school delays or closure. Each family must have a plan of action in case students are dismissed before parents are home. Families should address these questions:

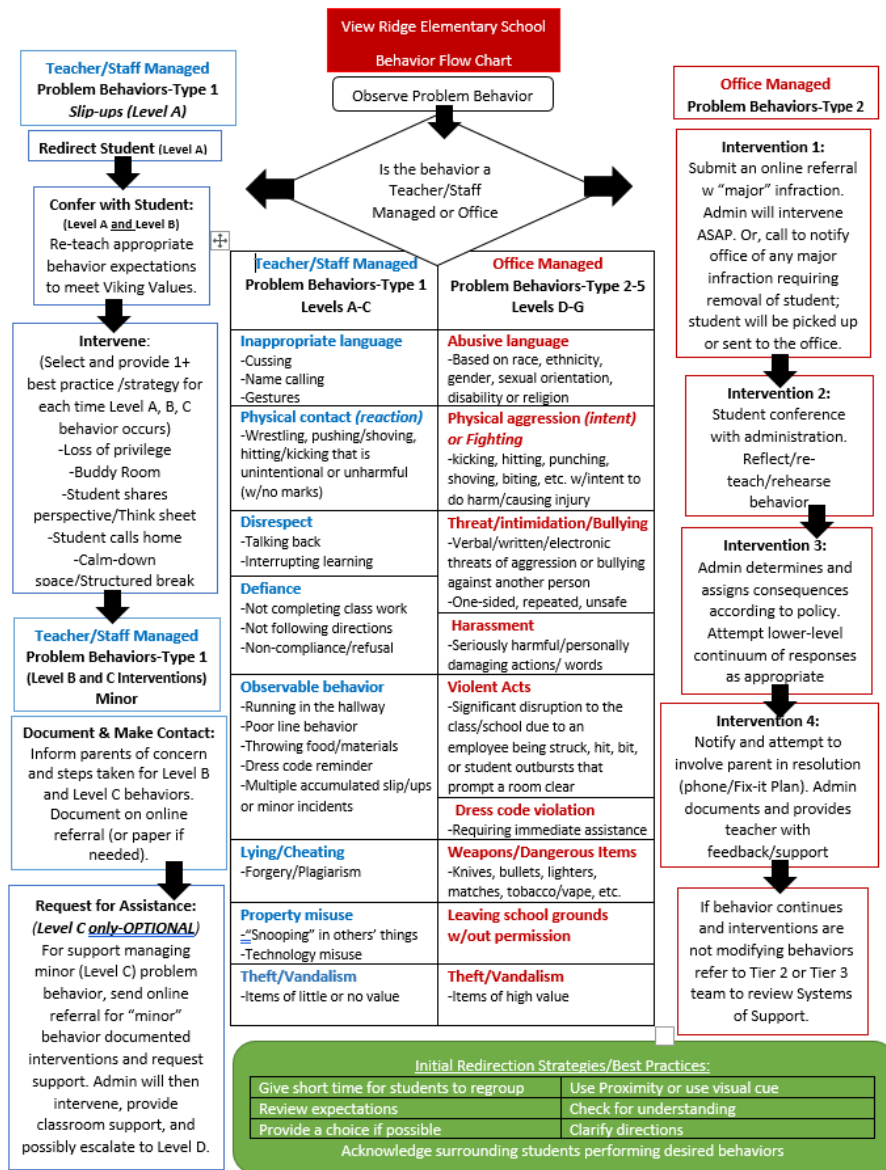
- What is the best route to and from home if your child cannot be dropped off at the normal bus stop?
- Where should your child go if he/she needs help?
- Who will care for your child until you arrive?
- Is there someone your child could call to calm fears?

Announcements are for one day only. Do not call the school, the administration office or media about school closure. Listen to the media. The district notifies the media of changes before 5:30 a.m. Information is also placed on the District Information line 425-385-4636 and website <http://www.everett.k12.wa.us>.

Most area radio stations announce school cancellations, delay of starting time or early dismissal. Announcements are also made on several TV stations.

DISCIPLINE POLICY AND GOALS

The overall goal of all discipline at VRE is to instruct students in the skills necessary for effective self-discipline and to encourage students to become self-managers. Guided by the school-wide Positive Behavior Intervention Supports (PBIS), we make decisions to support students in learning the expectations and behaviors to support a positive learning environment. We have three key pillars to PBIS to support safety and social-emotional learning: Expectations, Acknowledgement, and Interventions. Expectation includes the teaching and implementation of our five Viking Values (Respect, Responsibility, Kindness, Perseverance, and Integrity), expectations matrix, classroom meetings, and developmentally appropriate lessons. Our school-wide social-emotional curriculum is Second Step, supported by our teachers, counselor, and behavior interventionist. Acknowledgment has to do with positive reinforcement efforts including Viking Victory Cards, Viking Victory Celebrations, Monthly Pride Assemblies (student recognition awards—Viking Heroes and Scholars), and the Golden Dustpan. Interventions include following our View Ridge Behavior Flow Chart to support students as needed and Student Intervention Team meetings. We will work closely with the counselor, behavior interventionist, families, and with the school administrator to develop appropriate, consistent interventions to address behavior concerns. It is the teacher's responsibility to inform parents of on-going behavior concerns. Please feel free to ask your child's teacher for an update at any time. Please see below for View Ridge's Behavior Flowchart.



The Everett Public Schools' Student Responsibilities and Rights Policy booklet will be sent home during the first week of school. Specific expectations for student behavior in the classroom, lunchroom, and on the playground will be clearly taught, re-taught, and reinforced. Failure to comply with behavior expectations may result in one or more of the following consequences: completing a problem-solving worksheet, conferencing with a staff member, time-out, missed recess, restitution, community service, or other appropriate disciplinary action as outlined in Everett Public Schools' policies and procedures. Toy guns, weapons, ammunition or any object that could be considered a weapon are not permitted by state law on any school property and will result in disciplinary action.

DISMISSAL

School ends at 3:30 PM. Students are expected to go directly home from school when classes are dismissed. Students going to a friend's house after school must make arrangements with

their parents and a note or phone call must be received by 2:45pm in the main office. A clear understanding should exist between parents, school and child when a change in a regular pattern of dismissal is to occur. If a regular non-bus riding student wished to ride a school bus, a note must be sent to school and cleared through the school office. Often busses are loaded to capacity so it may be impossible to accommodate extra riders.

DRESS AND APPEARANCE

Student dress will be regulated to preserve a beneficial learning environment and to assure the safety and well-being of all students. Dress which presents a health or safety hazard, damages school property, or which creates a material and substantial disruption of the educational process is prohibited as per Everett Public Schools policy 3224. School officials will work with students, parents, and teachers to communicate descriptions of dress considered disruptive to the educational process. **Please label jackets, backpacks, lunch boxes, water bottles, etc. with your child's first and last name with a permanent marker, to support with proper return of items.** The following are guidelines for appropriate dress:

All Clothing/Accessories: No obscene, vulgar or suggestive logos or slogans, or tobacco, alcohol, drug or gang references are allowed.

Tops: Shirts should cover the shoulders and be long enough to cover the mid-section of the body.

Pants/shorts/skirts: Pants must be secured at the waist and cover the stomach and underwear. Shorts and skirts must reach below the child's fingertips when his/her arms are extended downward.

Hats: Hats and hoods are to be removed while inside the building.

Shoes: Please help your child make good, safe choices for school. Heels and flip flops may interfere with activities or play. Rollers in shoes are not allowed inside the building or on the playground during school hours.

Fragrances: Perfume, fragrances, and scents are discouraged and may not distract, disrupt or offend others. Many people are allergic to perfume and fragrances. These standards will be applied in a consistent and nondiscriminatory manner. We do have staff and students who are sensitive and allergic to fragrances. View Ridge Elementary has a duty to accommodate employees and students who may be adversely affected or suffer a severe medical reaction when exposed to a fragrance or scented product. It is our responsibility to ensure that all reasonable steps are taken to make the working environment safe for those with chemical sensitivities in the same manner that any other health issue or safety hazard is addressed. Remember, fragrances and scents are found in a wide range of products including perfume, aftershave, deodorant, soap, air fresheners, fabric softeners, laundry detergents, facial tissues, and candles. Exposure to fragrances and other scented products may trigger adverse health reactions (e.g., asthma attack, anaphylactic reaction and shortness of breath) in individuals with asthma, allergies, migraines, or chemical sensitivities. Other less serious but equally debilitating symptoms include headache, sore throat, runny nose, sinus congestion, wheezing, dizziness, anxiety, anger, nausea, fatigue, mental confusion and an inability to concentrate. In the interest of maintaining a safe and healthy working environment for employees, students, and their families, WE ARE A FRAGRANCE FREE SCHOOL!

PE: Physical Education is a part of the basic education curriculum required for each child. Your child will have PE each week. Your child's teacher will notify you of scheduled PE days. Students must wear lace-up or Velcro (not slip-on) sport shoes with non-marking soles on their PE days (a special pair may be kept in your child's locker at school). Clothing should allow for a wide range of motion and strenuous physical activity.

EMERGENCIES

View Ridge has Emergency Procedures prepared for earthquake, fire, shelter-in-place and 'lockdown' situations. Whole school practices are regularly scheduled. In the event of a true emergency, please be patient. Our first priority will be to ensure student safety. Office personnel will be busy helping students, directing emergency crews, etc., and may not be able to answer your calls promptly. If you choose to pick up your child, you must first come to the office to sign-out the student. Our staff is trained to deal with emergencies and will not release any child until an authorized person arrives. It is important for parents/guardians to review, with their children, procedures to use if any emergency occurs on their way to and from school, or if an adult is not at home when they arrive home from school.

FIELD TRIPS

Field trips may be taken as a part of our educational program. Parents are required to complete their child's permission form and have an up-to-date emergency card on file before students are allowed to participate in the field trip. Teachers often seek parent volunteers to chaperone on field trips. **In order for parents to be considered as field trip chaperones, they need to have a completed volunteer form on file in the school office.** Don't wait until your child's field trip is announced to complete your volunteer form. Volunteer forms take **two to three weeks** to be processed at the District office. We encourage every parent to complete a volunteer form early in the school year. Siblings are not allowed on field trips.

FINES

Students and their parents/guardians are responsible for lost library books, textbooks and fines. Final report cards will be withheld until fines are paid in full.

FOOD

Everett Public Schools' focus is on providing nutritious food for students through their meal programs. In keeping with this goal, we request that you consider sending healthy food options with your child and when sharing food with the entire class during celebrations. This includes midday snacks (if part of the classroom routine), birthday goodies, and holiday treats. **All food shared with other students must be store bought.**

HALLWAY AND WALKWAY PROCEDURE

The hallways and walkways will be a safe and quiet environment where people interact with courtesy and respect. Teachers will teach proper hallway procedures and escort their classes throughout the school day. Students will move safely in the hallways and walkways by walking on the right hand side.

Students needing to enter the school building prior to the bell must have a pass from their teacher.

HEALTH AND SAFETY

Accidents

If an accident occurs, a child should report the incident to the duty supervisor immediately. If a child is injured at school, a staff member competent in first aid will give the student emergency first aid treatment. Parents (or their emergency contact) will be notified immediately. 9-1-1 will be contacted if the emergency be life threatening.

Communicable Diseases

If your child has been diagnosed with a communicable disease, please notify the main office, 425-385-5400. The student will need a doctor's written permission to return to class.

Illness

When a student becomes ill at school, View Ridge's nurse, health room assistant, and office staff will follow these procedures:

- The student reports his/her symptoms and his/her temperature is taken. At that time, a decision is made whether or not the child should go home. Often a short rest in the nurse's room is all that is needed. However, if a child's temperature is 100 degrees or above, the student will need to be sent home. If it is determined that the student needs to go home, parents/guardians will be notified by phone. The parent/guardian or emergency contact person must come to the school and pick up the sick student. Sick children will not be sent back to class or home on the bus. In the event of a serious or life-threatening illness, 9-1-1 will be called.

Please do not send an ill child to school. Children are welcome back at View Ridge when they are able to take part in the full-school program, including recess. Supervision of students is not available in classrooms during recess.

Immunization

A list of the minimum requirements is available in the school office. These immunizations must be recorded on a Washington State form showing the month and year of each dose and signed by a parent/guardian. Exemptions are available for medical, personal or religious reasons. If an outbreak of a vaccine-preventable disease, for which the student is exempted, should occur, the student will be excluded from school for the duration of the outbreak.

Medication at School

State Law requires a doctor's signed authorization to dispense medication at school. Medication must be in its original container and properly labeled by the licensed prescriber. Over the counter medications such as Tylenol, eye drops, antacids, cough drops, cough and cold medications, etc. are subject to the same regulations. Students are not allowed to carry medications on their person; parents are required to bring medications to the health room. Parents are allowed to come to the school office to dispense medication if they so choose.

Screenings

Everett Public Schools provides vision, hearing and scoliosis screening during the school year. For more information, please contact the Health Room Assistant at 425-385-5405.

HIGHLY CAPABLE PROGRAM

In accordance with the philosophy of the Everett Public schools to develop the special abilities of each student, an instructional program for those that have been identified from testing and meet the criteria, is offered. This program is offered for grades 2nd through 5th at Mill Creek, Cedar Wood, Penny Creek and View Ridge Elementary Schools

Students may be referred for the Highly Capable Program by either parents or teachers.

Eligibility is determined by assessment data and an observation of the student. If you have questions about the program, please ask your child's teacher.

The framework for the program encompasses, but is not limited to the following"

- a. Expansion of academic attainment and intellectual skills.
- b. Stimulation of intellectual curiosity, independence and responsibility.
- c. Development of a positive attitude toward self and others.
- d. Development of originality and creativity

HOMEWORK POLICY

Parents can assist students with their homework by providing a specific place for them to work. It should be comfortable, well-lit, and free of distractions such as the television and electronic games. A regular time set aside for completing assignments, reading, or writing will go a long way to establishing good study habits. You should expect your child to study about 10 to 45 minutes each day (depending on age, specific student needs, and teacher's judgement).

This could include:

- Reading each evening. Students should read or be read to for at least 20-30 minutes each day. Reading will increase your child's success in life.
- Practicing Math Facts (addition, subtraction, multiplication, division) approximately 10 to 15 minutes. Encourage them to problem-solve with you.
- Finish any work not completed in class or other assigned work.

Parents are encouraged to check their child's backpack for notes from the teacher regarding incomplete assignments, make-up work, or special projects which may require additional time at home. Many teachers require a parent's signature on a nightly or weekly homework sheet or planner. Assignments are expected to be turned in on time.

PARENT INVOLVEMENT

1. Make a commitment to listen to your child talk about his/her school work and to give your child some time each day when he/she has your undivided attention.
2. Contact your child's teacher by note or phone call if you have any concerns regarding his/her assignments.

3. Encourage your child to be responsible and ask questions about the assignment before leaving school.
4. Provide a special place, proper supplies, and a regular planned time when your child can study without distractions or television, telephone, or other siblings.
5. Provide your child the opportunity to go to the library and other resource areas in your community.
6. Be sure to frequently check with your child on the progress of completion of long term assignments.
7. Help your child develop a system so that homework will not be left at home. Your child should take the responsibility of remembering his/her homework.
8. Participate with your child in the enrichment activities that are related to school projects.

INSURANCE

The Everett School District provides each family with information on low cost student insurance. Contact the office staff for additional information.

LOCKERS AND DESKS

Lockers, desks, and storage areas are the property of the District. No right or expectation of privacy exists for any student as to the use of any space issued or assigned to a student by the school. Lockers and other spaces are subject to search in accordance with district policy. Lockers are assigned by classroom teachers. Each teacher will establish a procedure for students to access their lockers in a quiet and safe manner. Combination locks or padlocks are not allowed on school lockers.

LOST AND FOUND

Articles of clothing or other items found on the school grounds are taken to our Lost and Found located in the cafeteria foyer. Smaller items are often brought to the office. Typically, a school collects numerous lost and found items. Please try to mark clothing and encourage your children to check the Lost and Found if they lose something. Prior to any school break (winter break, spring break, summer break), unclaimed items will be taken to charity. ***Please label jackets, backpacks, lunch boxes, water bottles, etc. with your child's first and last name with a permanent marker, to support with proper return of items***

MISSED WORK

Students who were absent will be given a reasonable amount of time to complete missing assignments. Homework for an ill child can be requested by contacting the office prior to noon. Homework will be ready for parent pick-up in the office after the school day. For reasons other than illness, it may not be possible to provide the materials for missed class work.

PARENT TEACHER ASSOCIATION (PTA)

View Ridge Elementary Parent Teacher Association encourages you to join and participate in its many activities. A membership drive will be held in the Fall and membership information is available in the school office throughout the year.

NATURAL LEADERS

Natural Leaders serve as multi-cultural bridges between students, families, communities, and schools. Natural Leaders are multi-cultural families who want to learn more about the education system to support partnerships between families, communities, and schools. They are leaders in their community that work as a team with family advocates, family support centers, and school staff to: Build relationships with families Listen to families' ideas on how to help their children be successful in school Bring families and schools together to plan/implement the families' ideas.

How the Natural Leaders Program Works:

- Currently, our online training academy consists of a 1.5-hour session, once per week, for 5 weeks. The training academy is held twice per year at this time.
- These trainings are open to school staff and parents; however, parent leadership will be centered.
- Natural Leaders training highlights effective collaboration between families and staff.
- Parents become empowered through leadership and social-emotional learning. They then work together to implement them into their school communities.

WATCH D.O.G.S

Watch D.O.G.S. (Dads Of Great Students) is the safe school initiative of the National Center for Fathering that involves fathers and father figures to help create a more safe and secure learning environment in our nation's schools. Watch D.O.G.S. are fathers, grandfathers, step-fathers, uncles, and other father figures who volunteer at their student's school. View Ridge Elementary encourages all fathers and adult male volunteers to become Watch D.O.G.S.

- Become an approved Everett Public Schools volunteer. All View Ridge volunteers must be an approved Everett Public Schools volunteer. These approvals are good for three years. You may see the office for an approval form or complete the process online here.
- Choose a day that works for you. We ask that you commit to the minimum of one half-day (full-days are encouraged) and give at least one weeks prior notice to your volunteering day. Once you have chosen a date please e-mail Ms.Lee at slee@everettsd.org
- Have a great day with your student at school! Please check in at the office at 8:45. You will receive your Watch D.O.G.S. shirt and vest along with your schedule. You will enjoy a day on the school's campus volunteering in classrooms, spending time out at recess, having lunch with your student and being present in the school. Your day will end at 3:40 p.m. If you have any further questions, please contact the school office at 425-385-5400. The View Ridge Vikings thank you for your time volunteering and making our school a better place!

PARENT TEACHER CONFERENCES

View Ridge Elementary School's parent teacher conferences are scheduled twice a year in October and March. Students will be released from school early during these two weeks. You will receive an invitation to meet with your child's teacher. This is an important way in which parents and teachers can get to know each other and to work toward the child's success. Conferences provide parents and teachers an opportunity to discuss the child's special needs and interpret his/her progress.

PARTY GUIDELINES AND INVITATIONS

Classroom celebrations are intended to be brief, to be tied to our district learning standards and to be considerate of the needs and values of all View Ridge Families. Treats must be store purchased. Since many students have food allergies, it is suggested you speak with the teacher prior to bringing food into the classroom. No private party invitations will be handed out at school unless each child in the classroom is receiving one.

PERSONAL INFORMATION

It is imperative that you keep us informed of any changes in your telephone number, residence or workplace. In the event of an emergency, student illness, or teacher concern, we need to be able to reach you. Please remember to verify your emergency contact numbers as well.

PETS

Please keep pets off View Ridge's playground and school campus. This includes bringing pets on a leash when dropping off or picking up students. At View Ridge, we have students who are allergic and/or afraid of animals. We also discourage any mess a pet may make. Pets are not allowed at school, even for "show and tell." If an animal or pet is on our campus, every effort will be made to contact the owner. If we cannot identify the owner, the pet will be impounded.

REPORT CARDS

Report cards are issued twice in a school year, February and June. Semester 1 report cards will be mailed home, and Semester 2 report cards will be sent home with the students on their last week of school.

SAFETY PATROL

Responsible students are selected and trained to help our child cross safely at designated crossings and assist students in entering or exiting their cars in our pick up lines. All students are expected to use the designated crosswalks and to follow the directions of the safety patrols. Student patrols are supervised by a View Ridge School staff member.

SCHOOL ACTIVITIES (Before/After School)

At various times throughout the school year students may have an opportunity to participate in planned activities before or after school. **Participation is optional.** Parents will be sent a

written notice of activities. If they want their student to participate, parents must sign a permission slip and provide or arrange transportation to school or home for their student.

SCHOOL SUPPLIES

Specific grade-level supply lists are available from the school office and on the View Ridge website. Please label your child's personal supplies.

SCOOTERS, SKATEBOARDS AND ROLLER BLADES/SHOES

Scooters, skateboards, roller blades or roller shoes will not be allowed at school during school hours, unless given special permission by the administrator or designee. They present issues of safety, storage, and a distraction to the learning environment.

STUDENT APPOINTMENTS (doctor, dentist, etc.)

We discourage student appointments, during the school day, because we believe that each school experience is valuable to a child, however, we do recognize the need for doctor and dental appointments and that sometimes emergencies occur. Because we are concerned about the safety of our students, please come to the office and sign your child out of school. All students leaving during the school day must be picked up in the office, not the classroom or cafeteria. Once you have signed your child out, the secretary will call for the student to meet you in the office or give you a pass to pick up your child on the playground if it is during recess time.

STUDENT SAFETY TIP LINE

425-385-5405 Information will be kept confidential.

STUDENT SUPPORT SERVICES

Systems of Support

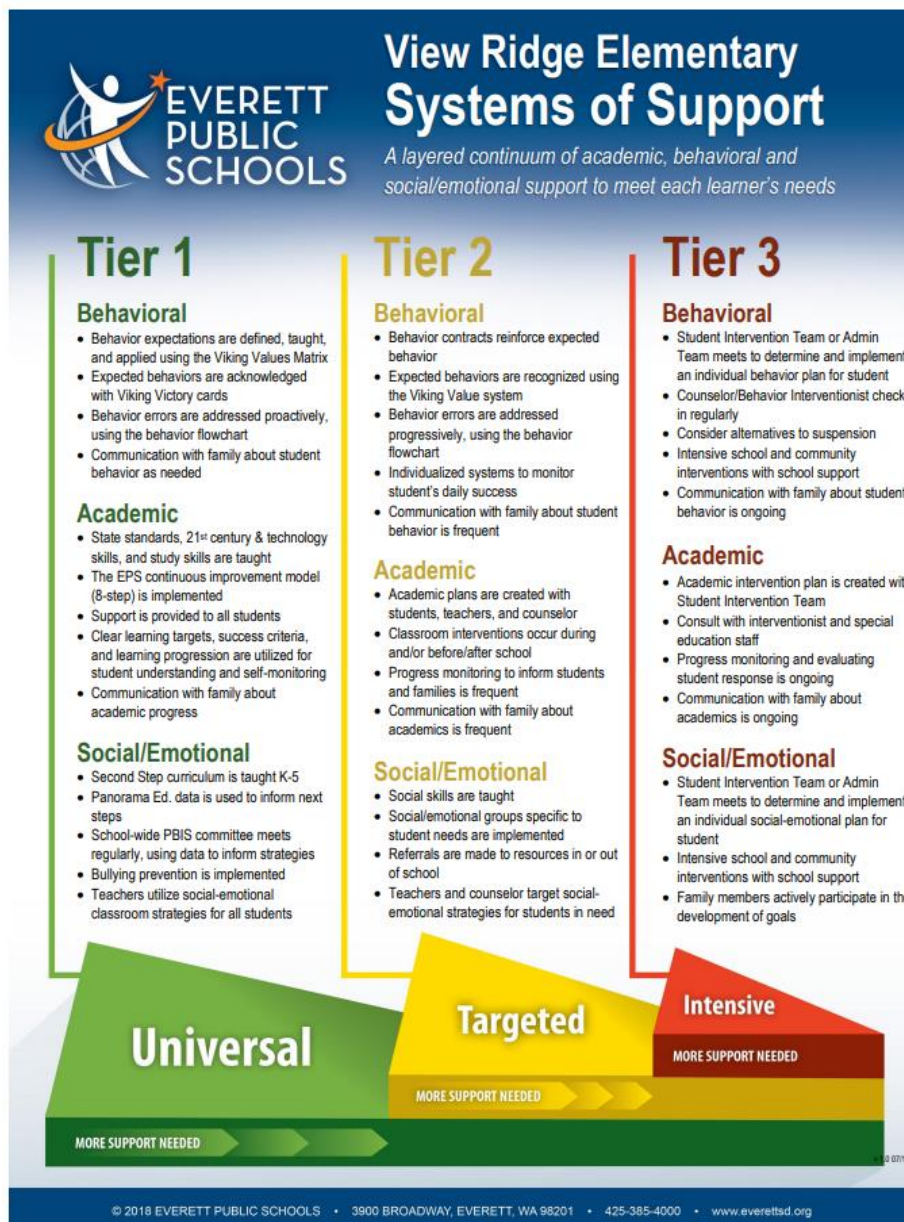
We have a tiered layer of supports that are school-wide, staff supported, and consider the whole child needs of behavioral, academic, and social/emotional support to support their continued growth and success as a View Ridge Viking

Multi-Tiered Systems of Support (MTSS) Tier 2/Tier 3 Teams

View Ridge's Student Intervention Teams—MTSS Tier 2 and Tier 3 teams-- meet weekly to discuss students who have been identified by their parents or teachers as experiencing difficulty with learning. The team will invite parents to participate when specific goals or changes in routine may be recommended for a student. Parents with concerns are encouraged to speak directly with the teacher who may recommend a SIT meeting.

The MTSS teams are responsible for recommending students to the Evaluation Team for special education consideration. Parents are required to be notified and invited to participate in all Evaluation Team meetings.

.



Special Education Team (SET)

At View Ridge Elementary School our Special Education Team meets weekly with parents of qualifying students to discuss special education assessment results, learning goals, and programs.

If you are concerned about your child's progress, please contact your child's teacher and/or case manager.

TELEPHONE/MESSAGES

Please do not call the school office to relay messages to your child unless it is a family emergency. Calls into the classroom disrupt student learning. All messages and notes must come to the school office by 2:45 p.m. in order to assure their delivery before the end of the

school day. Student use of telephones is for emergencies **only**. If there is a change to your child's schedule, please talk to them **before** they are sent to school. Students without a written note will follow their regular dismissal routine. Delivery of forgotten items (lunches, books, etc.) should be brought directly to the school office. They will be delivered to your child at an appropriate time. Students needing to contact their parents/guardians during the school day will receive permission, from a staff member, to use the student emergency phone in the office.

TOYS

Students are to bring appropriate "school tools" to school and leave all personal play items at home (toys, sports equipment, fidgets, trading cards, virtual pets, etc.). When prearranged and for learning purposes, students are welcome to bring items from home. Items for a class project or sharing will remain in a backpack or closed bag until the appropriate time for use. Toys and/or personal play items inappropriately brought to school may be taken away by any staff member and held until the end of the day, end of the year, or until a parent comes to school to retrieve the item. **Cell phones are to be turned off any time a student is on campus or school bus.** Students must keep cell phones in a backpack and should not be taken out while at school. Improper use of a cell phone will result in it being confiscated, and a parent will be required to pick it up from the office.

VISITORS

View Ridge parents/guardians are welcome to visit their child's classroom. Please contact the teacher at least one day or more in advance of your visit to confirm the day and schedule a time. When you arrive at school on the day of your visit, please sign in at the office and obtain a visitor's badge before going to your child's classroom. If you are stopping by school to drop something off, we ask that you leave it in the office unless the teacher is expecting you. We want to honor instructional time with as few interruptions as possible. To assure safety and maintain the best environment for learning, only parents/guardians with students enrolled in View Ridge will be allowed to visit classrooms unless arrangements have been made with the principal. Siblings or young children are discouraged from visiting while class is in session. School-aged friends and/or relatives are not allowed to attend school with View Ridge students. They are welcome to come for lunch. Please notify the cafeteria if additional school lunches will be purchased.

VOLUNTEERS

Volunteers are important partners at View Ridge Elementary School! We have a continuing need for volunteers in classrooms and around school. **In order to volunteer for any student-related activity, please complete a current Everett Public Schools' volunteer application.** Forms can be completed and submitted on line, through the Everett Public Schools web site. Volunteer forms take up to three weeks to be processed at the district office. We encourage every parent to complete a volunteer form early in the school year. Approval is valid for three years. Volunteers must sign in at the school office when they

arrive and will be given a volunteer badge to wear. If you are interested in volunteering in a classroom or on a field trip, please let your child's teacher know.

VOTER REGISTRATION

The only requirement to vote in Washington State is that registration is completed at least 30 days prior to an election. It is possible to register to vote immediately upon moving into the state. You may register to vote online at the following website;
<http://www.sos.wa.gov/elections/myvote/olvr.html> .

WITHDRAWAL OF STUDENTS

Parents who are withdrawing their children from View Ridge Elementary should let the school secretary know in advance. You will be asked to sign a withdraw form and it is also suggested that you request a copy of your child's immunization status record from View Ridge's health room assistant prior to withdrawal. This will assist you when enrolling your child at his/her new school.